

Global Land Observatory (GLO)

Generate and make available data, evidence and analyses on the status of land tenure and governance issues, as a reference point for policy makers, IGOs, civil society, private sector, academia, linking global with country commitments in the frameworks of the SDGs, the VGGT, and the New Urban Agenda (NUA).

More specifically, the GLO is set up:

- to **bring together** land data generation/monitoring initiatives and **make them visible and usable**;
- to **document and strengthen analyses** on the status-quo and trends with regards to land tenure and land rights/governance;
- to **undertake policy research**, feeding the development of specialized reports, knowledge exchange and high-level advocacy events on land tenure and land rights/governance;
- to **provide evidence** on relevance of responsible governance of tenure to promote food security, reduce inequality and enhance the sustainability of agri-food systems in the long term.

Data outcomes

- **Awareness and visibility of land and land data on a global stage**, documenting status and trends in land and land governance
- **To upscale data centralisation and generation**
- **Data consolidation and legitimisation**
- **Increased uptake and impact of land data**

Broader impacts

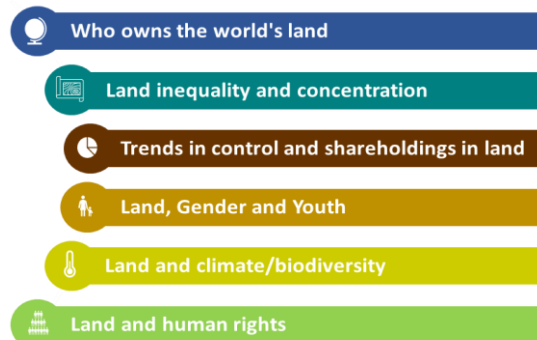
- **Scale up and strengthen collaboration of land data and monitoring initiatives**
- **Elevate the land discourse and build awareness at the highest political level** (including monitoring SDGs, VGGT, etc.)
- **Scale up policy engagement with regards land tenure and governance**
- **Strengthening transparency and accountability**

Indicators and methodologies

GLO combines core indicators, with complementary indicators and a toolbox of methodologies.

Aspect / GLO core indicators*	Lead	SDGs
1 Documentation all land	FAO/WB/UNHabitat	SDG 1.4.2
2 Perception of tenure security	Prindex	
3 Documentation (agricultural) land	FAO	SDG 5.a.1
4 Women's land rights (in practice)	FAO	
5 Women's land rights (legal)	FAO	SDG 5.a.2
6 Land inequality	ILC/FAO	SDG 10.3
7 Violence against environmental HRDs	OHCHR/ UNEP	SDG 16.10.1
8 Tenure, IPLC and locally managed natural resources	RRI	SDG 13.1
9 Land degradation	UNCCD	SDG 15.3.1

* Additional indicators related to SOLAW could be included. TBD based on recently published SOLAW report/indicators.



Products

Open access database and monitoring platform;
A one-stop-platform providing the broader land community with sets of indicators;
Methodologies and tools for broad-based land tenure and governance monitoring;
State of Land Tenure and Governance (SLTG) report;
Analysis & policy guidance documents on land related topics.

Alignments

Aligned to SDGs, VGGT and other global frameworks such as UNDROP, UNDRIP;
Embedded in Global Land Agenda as Global Accountability framework;
Potential custodian for CBD Global Biodiversity framework.



<https://www.fao.org/tenure>

<https://www.landcoalition.org/en/>

<https://www.cirad.fr/en>